



SDHA Rabbit pAb

Catalog No	YP-Ab-18224
Isotype	IgG
Reactivity	Human,Mouse,Rat
Applications	WB,IHC-P,ICC/IF,FC,IP
Host	Rabbit
Alternative Names	SDHA; SDH2; SDHF; Succinate dehydrogenase [ubiquinone] flavoprotein subunit; mitochondrial; Flavoprotein subunit of complex II; Fp
Research Field	Tags & Cell Markers
Product Categories	Primary antibody
Host	Rabbit
Molecular Weight	Calculated MW: 73 kDa; Observed MW: 73 kDa
Clonality	Polyclonal Antibody
Background	Flavoprotein (FP) subunit of succinate dehydrogenase (SDH) that is involved in complex II of the mitochondrial electron transport chain and is responsible for transferring electrons from succinate to ubiquinone.
Dilution	WB: 1/500-1/1000 IHC: 1/50-1/100 IF: 1/50-1/200 IP: 1/20 FC: 1/50-1/100
Immunogen	A synthesized peptide derived from human SDHA
Purification	Affinity Chromatography
Conjugation	Unconjugated
Modification	Unmodified
Form	Liquid
Buffer System	Rabbit IgG in phosphate buffered saline , pH 7.4, 150mM NaCl, 0.02% sodium azide and 50% glycerol.
Concentration	1 mg/ml
Purity	≥90%
Storage	Store at 4°C short term. Aliquot and store at -20°C long term. Avoid freeze/thaw cycles.
Background	



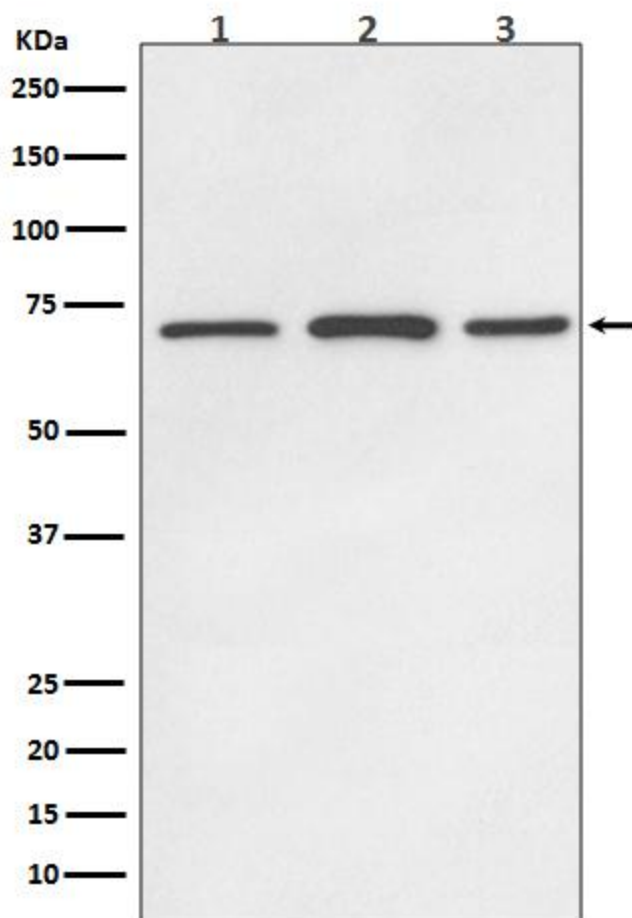
matters needing attention

Avoid repeated freezing and thawing!

Usage suggestions

This product can be used in immunological reaction related experiments. For more information, please consult technical personnel.

Products Images



Western blot analysis of SDHA in (1) HeLa lysates; (2) mouse brain lysates; (3) rat brain lysates; using SDHA antibody